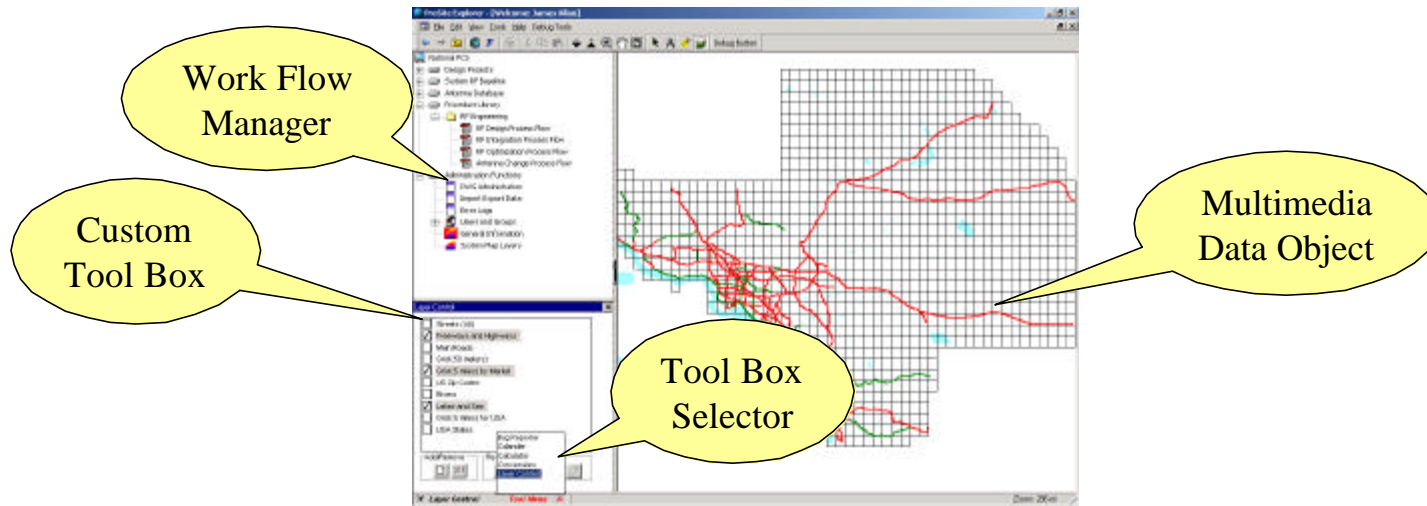


Prosite Explorer Knowledge System



Need an Enterprise level client server database system for your organization, but don't have a couple of million dollars knocking around to start a blank page development?

Need something that works quickly but don't want the 'usual' half-hearted User interface that companies often have to settle with?

Prosite Explorer Knowledge System

Introducing the ProSite Explorer Knowledge System.

- Easy to use.
- Integrates external relational database sources within one interface..
- Replaces your Network LAN and protects your Business Data.
- Treats 'non-database' data (documents) with database security.
- Fully integrated GIS for spatial analysis.
- Enhances process through individual "Work Flows" and tools.
- Easy to create custom solutions for corporate needs.
- Self-healing, easy to maintain and support.
- Connects Corporations to Field Offices and Field Workers.
- Controlled Security Access.
- Relatively inexpensive!





“Its about as ‘Shrunk-Wrap’ as an Enterprise Level database management system can be.”

This system affords a significant reduction in the cost and time to ownership, offering businesses a high quality interface that will streamline their processes.

Prosite Explorer Knowledge System

The ProSite Explorer Knowledge System offers more than a simple database access method. It connects people to the data and enhances process through the automation of business practices. To be successful, a Knowledge System must be versatile to meet changing corporate needs.

There are four key areas to building a comprehensive Knowledge System:

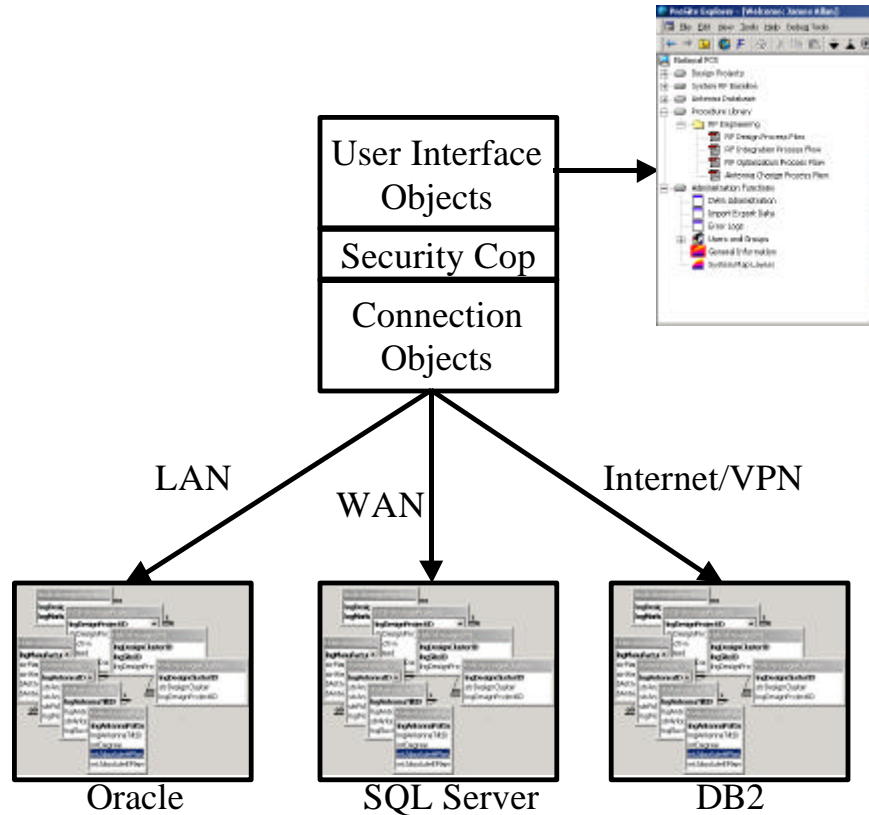
-  **Federate External Relational Database Sources**
Simplify your processes by grouping all of your relational data sources within one interface.
-  **Create an Electronic Folder Structure for your Business Data.**
Replace your LAN with a database driven system that 'flexes' its presentation for each Team Member. Place your 'non-database' data within the ProSite Explorer database.
-  **Model Your Business Work Flows**
Create team member "Work Flow" tasks to coordinate effort across the Knowledge Team.
-  **Add Custom Tools to Automate Your Processes.**
Having connected People with Data, apply your custom tools to automate your Processes. Make effective use of the Knowledge Worker's time.

Prosite Explorer Knowledge System

1

Federate External Relational Database Sources

Simplify your processes by grouping all of your data within one interface.



The Work Flow Manager can automatically display most external relational database sources as a simple 'Tree View' folder list.

Re-use your existing database forms, or use our objects with built in spell checking, color coding and change history methods.

Integrate cross-system logic such as added change history and integrity analysis.

The ProSite Explorer Connection Objects use a variety of good design techniques to enable high performance connectivity over a wide range of connection environments.

ProSite Explorer's SmartSynch_{TM} and SmartCache_{TM} technologies enable a ruthless balance of workload and data between the Server and the Client.

Connect Field Offices via Modem.
Connect Field Workers via Replication.
Maintain a full multimedia capability.

Prosite Explorer Knowledge System



Create an Electronic Folder Structure for your Business Data.

Replace your LAN with a database driven system that 'flexes' its presentation for each Team Member.

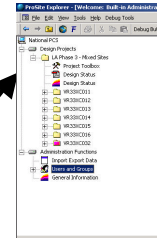
Model Your Business Data



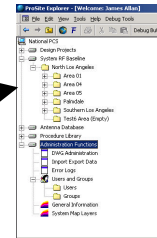
Create a Generic Folder Structure



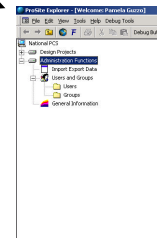
Use our Security Cop to restrict each Team Member's access



User 01



User 02



User 03

It looks like Windows Explorer except that naming conventions are automatic, data is never replicated and you can apply instant filters to reduce the data overload.

Your LAN has never looked so organized.

Our Security Cop applies database permissions to folders and documents.

Give each Team Member access to only the data that they need. Safely share and collaborate data across teams, departments and regions.

Don't email 'Status' spreadsheets ever again. One person has modification permission and everyone else can view.

Maintains full version history.
Maintains full backup.

Prosite Explorer Knowledge System



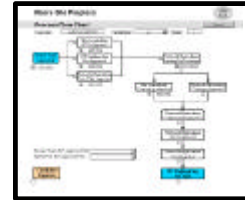
Create an Electronic Folder Structure for your Business Data.

Place your 'non-database' data within the ProSite Explorer database.



Database Form View

- Built in Spelling Checker.
- Automatic Change History.
- Color and tool tip coded.
- The simplest system has just these forms, but you could do more.



Project View

- Integrate Elegant Project Tracking
- Integrate Microsoft Project



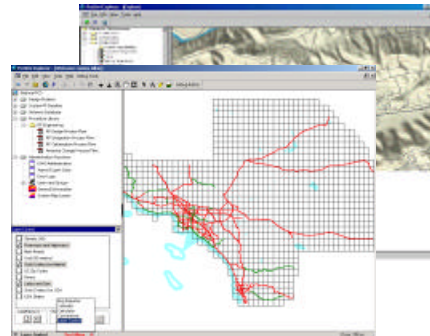
Newsgroup View

- Add your own discussion group.
- Append to any Element in your Structure.
- Keep memos and notes handy for ALL to see.
- Very handy for those laborious conference calls.



AutoCAD, Picture, PDF, Word and Excel View

- Create your own Documentation/Procedure Library (each tailored to each User).
- Protect your Business Documentation within the database.
- Don't email status spreadsheets; put them in ProSite.
- One person with update privilege and no more version worries.
- Maintain automatic backup and version history of your documents



Map View

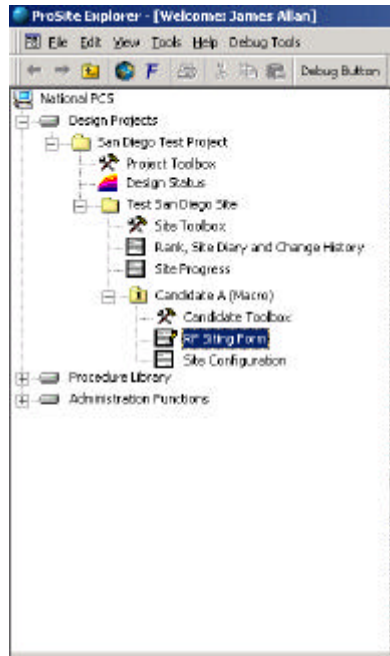
- Fully integrated GIS at an affordable price.
- Simplified GIS that focuses on the user and the Data.
- Project Managers set up the information at the Server.
- Users get automatic map distribution & display setup.
- Users get a true 'point and click' experience
- Users focus on the task.
- No huge licensing costs.
- No huge training or support costs.
- Entirely customizable for dedicated solutions.

Prosite Explorer Knowledge System

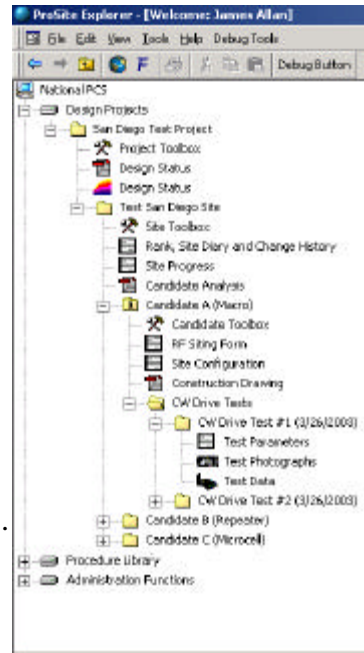
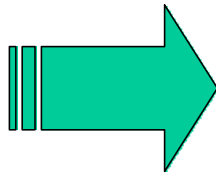
3

Model Your Business Work Flows

Create Work Flow tasks to coordinate effort across the Team.

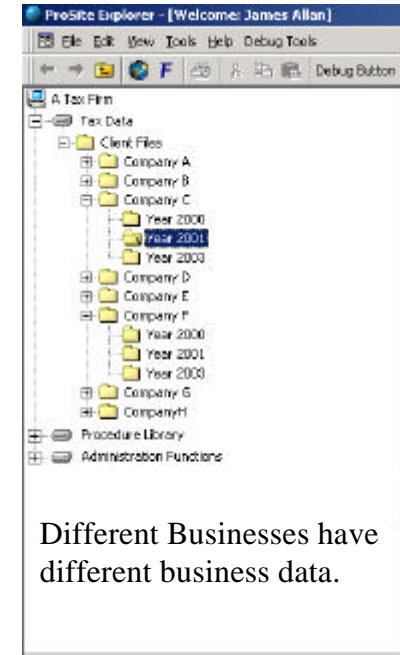


The folder structures are 'task' driven.
Folders appear and expand as tasks are completed.
Naming conventions are automatically applied.



The 'shape' of the structure indicates completeness.

Use individual work flows for each team member
to integrate the activities of your team.

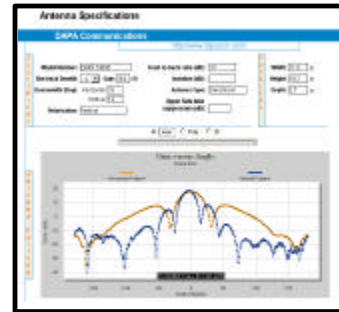
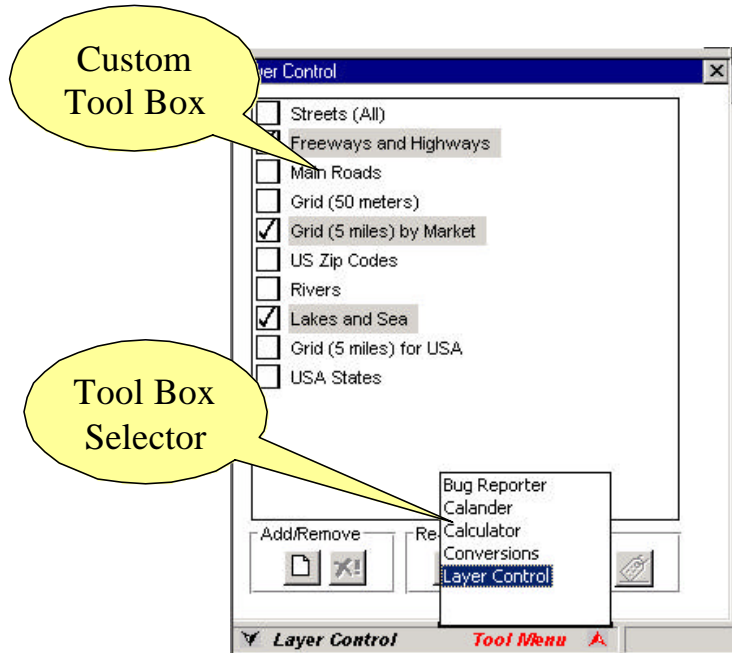


Different Businesses have
different business data.

Prosite Explorer Knowledge System

4 Add Custom Tools and Automate Your Processes.

Having connecting People with Data, apply custom tools to automate your Processes.
Make effective use of the Knowledge Based Worker's time.



Custom View

- Specify your own custom tools.
- Use our general 'Custom View' object.
- Append your own code.

Having connected to and intelligently filtered the data...

Introduce Work Flow for every worker and team...

ProSite allows the integration of custom tools and views to automate your processes.

Prosite Explorer Knowledge System

Electronic Folder Structures that Model Your Business LAN and are filtered for each User.

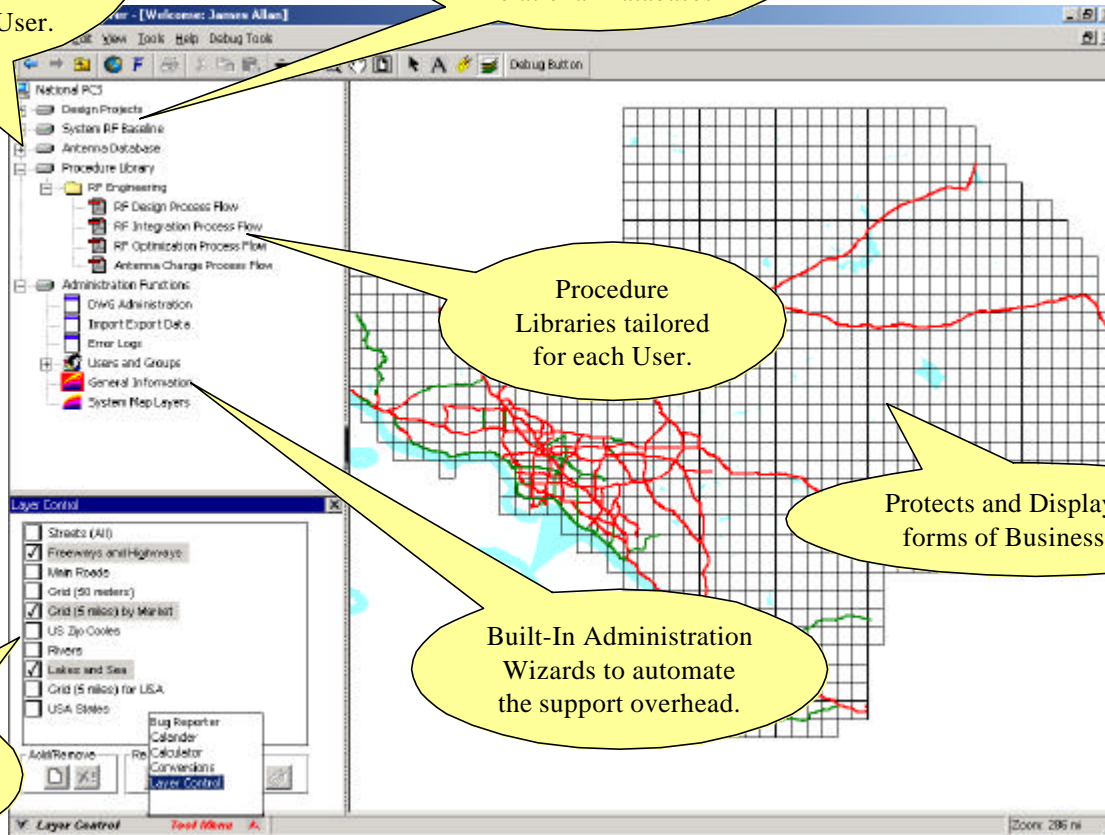
Different External Relational Databases

Procedure Libraries tailored for each User.

Protects and Displays ALL forms of Business Data.

Generic enough to include your own analysis tool menu.

Built-In Administration Wizards to automate the support overhead.



How Does It Work?

1

A Kernel of Code That does Not Alter.

Each Customer's modifications are held within their own class (code module).
Simply replace the customer's code class and the system is reconfigured for elsewhere.
This structure affords a significant reduction in the cost and time to ownership.

2

A System that Monitors Itself and is Robust to Modification.

Creating complex analysis systems for a great number of clients requires special considerations in monitoring, reporting and healing of software bugs and data issues.

3

A Client Application that is ready for custom modifications.

This is not a web page. Use the Power of Your Local Computer:
Take advantage of a true Client Server Architecture.
Connect, Display & Process

How Does It Work?

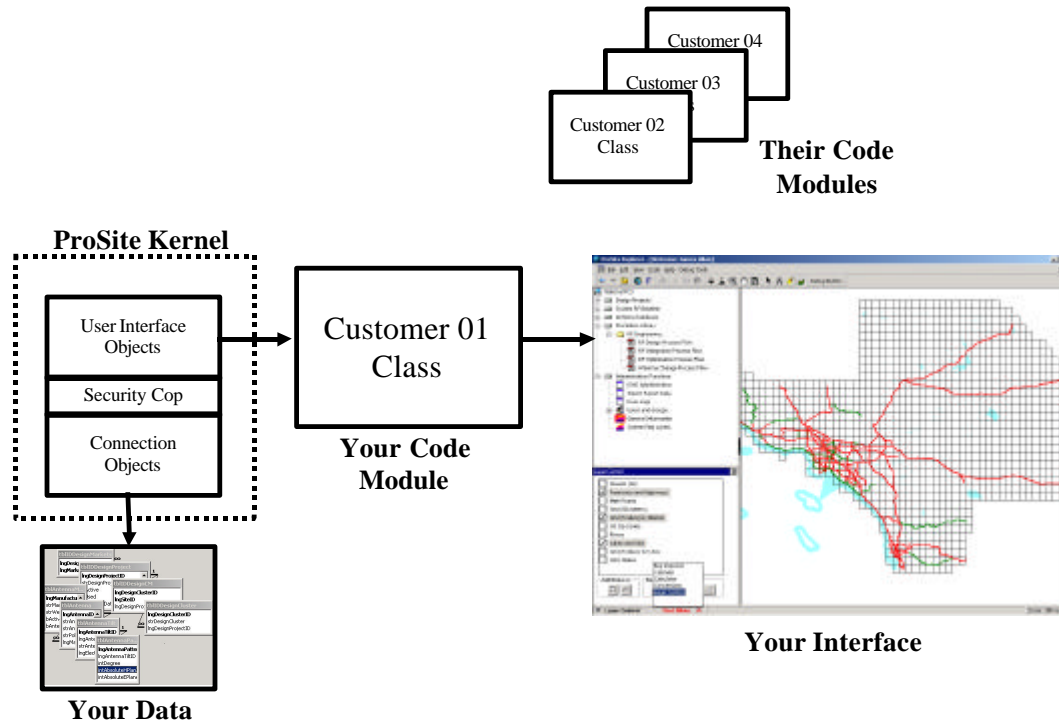
1

A Kernel of Code That Does Not Alter.

Each Customer's modifications are held within their own class (code module).

Simply replace the customer's code class and the system is reconfigured for elsewhere.

This structure affords a significant reduction in the cost and time to ownership.



How Does It Work?

1

A Kernel of Code That Does Not Alter.

Each Customer's modifications are held within their own class (code module).

Simply replace the customer's code class and the system is reconfigured for elsewhere.

This structure affords a significant reduction in the cost and time to ownership.

Connection Objects

- Handles the connectivity to relational databases.
- SmartSynch_{TM} and SmartCache_{TM} technologies finely balance workload and data between the Server and the Client.
- Supports 32000+ users simultaneously.
- Very user friendly messaging.
- Fast connectivity.
- Connect Field Offices via modem
- Connect Field Offices via VPN.

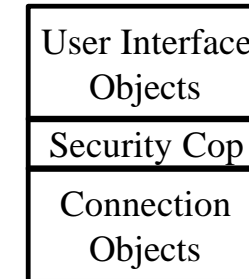
Security Cop

- Use these properties to place security settings on each element of your data sets.
- Security Cop interacts between data and user interface to define privileges and restrict access.

Use Interface Objects

- The Work Flow Manager allows the creation of an unlimited number of Business Structures.
- Each section of code has call-outs to the customer's own code module.
- To integrate your forms:
 - Add a few Prosite's Template properties.
 - Your Custom Form or Tool will integrate smoothly.
- The result is a very versatile solution.

ProSite Kernel



How Does It Work?



A System that Monitors Itself and is Robust to Modification.

Creating complex analysis systems for a great number of clients requires special considerations in monitoring, reporting and healing of software bugs and data issues.

Systems that involve data (bits), hardware (Cables and Network Connections) and software (your custom modifications) are complex. How do you get the system running effectively and keep it there? After all, versatility to corporate needs was one of the prime directives...

ProSite Monitor.

ProSite Explorer is a breathing application that monitors the conditions of every user/terminal across the Network. Only by collecting status information of every User, their application and current Network environment, can a detailed picture of the health of the System be determined.

ProSite automatically logs Usage statistics (User login/logoff time and date, User location), Network Conditions (Upload/Download transfer rates), User Computer metrics (available hard disk, local cache and application size, usual bandwidth).

Every function automatically recovers from errors and reports error conditions and arguments to the Server. Even the train of execution (which function called which function and what was their arguments) leading up the error is backtracked and logged.

Switching on the Procedure Logger traces and logs procedure execution along with data variables.

How Does It Work?



A System that Monitors Itself and is Robust to Modification.

Creating complex analysis systems for a great number of clients requires special considerations in monitoring, reporting and healing of software bugs and data issues.

ProSite BugReporter.

User feedback is easy with a dedicated Newsgroup for reporting minor real-life annoyances. Enter your comments/suggestions directly into the system and a Newsgroup thread is created.

ProSite Administration

A variety of tools and Wizards are available to automate the Administration of the system. Assign your own Administrator. Use your staff to maintain your own system.

The result is a very easy system to debug and maintain.

Developed since 1997 to be autonomous and self-healing, we realize that the best way to support a complex system is to create a high quality system that doesn't need it.

Support is still there, but it makes our job easier.

How Does It Work?

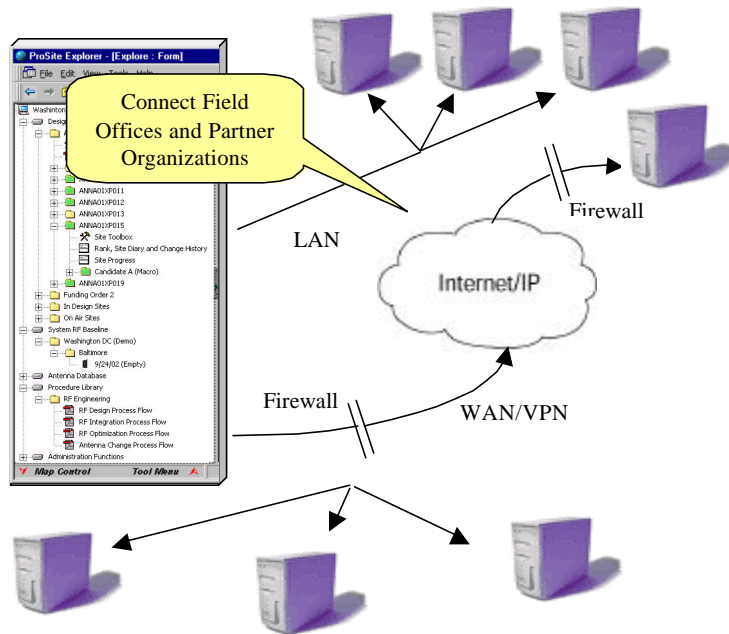
3

A Client Application that is ready for custom modifications.

This is not a web page. Use the Power of Your Local Computer:

Take advantage of a true Client Server Architecture.

Connect, Display & Process



Connect

Client Server Load balancing, full and partial replication allow full performance even on slow or difficult connections.

Every 'mouse click' is responsive.

Connect Enterprises without issue.
Connect Field Offices By Modem.
Connect Field Workers By Cache.

Display

Give your work teams an interface that they deserve. Application interfaces remain years ahead of web interfaces.

Process

ProSite enables connection to data and high performance analysis of the data sets.

How Do We Implement It?

1

Business Analysis and Initial System.

Take a look at your initial requirements.

Create the database structure and build a 'simple' system.

- A few forms with essential data.
- Automatic Change History and monitoring.
- Newsgroups and discussion memos attached to subject.
- Document and Image storage.
- Our Base GIS package (mapping).
- Procedure Libraries (tailored by Worker).
- Installation testing.
- Field Worker/Office connectivity.
- System Rollout.

The startup cost and risks are low.

The base system works well across your corporation.

2

Acceptance Tests and Confidence Period.

Use the system, become familiar with its workings over time.

Gain confidence in the support and functionality of the system as you scale up the user-base.

3

Add Modular Functionality for Modular development costs.

Use the versatility of the system.

It works well and is supported well.

You have not risked a large start up cost.

With confidence in your system, use your imagination as to what automation processes you wish to add.

Visit Us On the Web!

<http://www.distributed-wireless.com>

HOME - Microsoft Internet Explorer

File Edit View Favorites Tools Help

Back Forward Stop Home Search Favorites History Links

Address <http://www.distributed-wireless.com/> Go

WELCOME Wednesday, March 26, 2003

HOME PROFILE LEADERSHIP PORTFOLIO SOFTWARE TRAINING FTP JOBS CONTACT US SITE MAP

[EIRP](#) • [Pathloss](#) • [RSSI](#) • [Link Budget](#) • [Length](#) • [Power](#) • [Coordinates](#)

DISTRIBUTED WIRELESS GROUP

Distributed
Wireless
Group

DWG specializes in the Network Design, Optimization and Operational Management of both Indoor & Outdoor Distributed Antenna/MicroCell Wireless Solutions. DWG's turnkey capabilities result in operators' ability to grab the "time to market" edge over its competition. DWG staff have been engaged in the development of this technology and its optimal delivery solution.

• [Home](#) • [Profile](#) • [Leadership](#) • [Portfolio](#) • [Software](#) • [Training](#) • [FTP](#) • [Jobs](#) • [Contact us](#) • [Site Map](#) •

This site is optimized for Microsoft Internet Explorer version 4.0 and higher and Netscape Navigator version 4.0 and higher.
If you dont see the animation embedded in this page, take few minutes to download the free flash player from [Macromedia website](#).

Internet